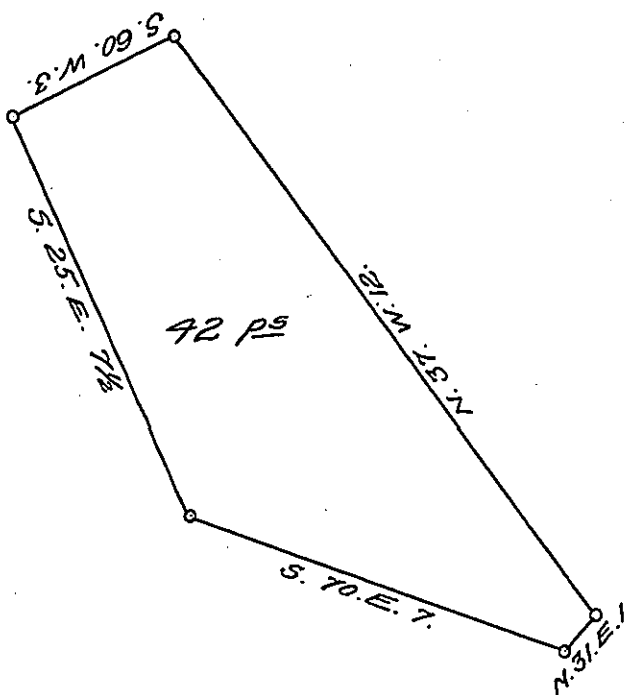


York County Shore



Lancaster County Shore

A Draught of Flat Island situate in the river Susquehanna in Martic township Lancaster County opposite to land belonging to the heirs of John Gordon dec^d on the York shore about thirty perches from the same about thirty perches north west of Battery Island and sixty perches west of Brush Island containing forty two perches Strict Measure Surveyed in pursuance of a Warrant dated the 28th day of July A.D. 1818 granted to Alexander Gordon and Daniel Gordon.

p^c Jacob Hibshman D.S.

To Jacob Spangler Esq. }
 Surveyor General }

IN TESTIMONY that the above is a copy of the original remaining on file in the Department of Internal Affairs of Pennsylvania, made conformably to an Act of Assembly approved the 16th day of February 1833, I have hereunto set my hand and caused the Seal of said Department to be affixed at Harrisburg, this thirteenth day of December 1907.

Henry Howard
 Secretary of Internal Affairs.